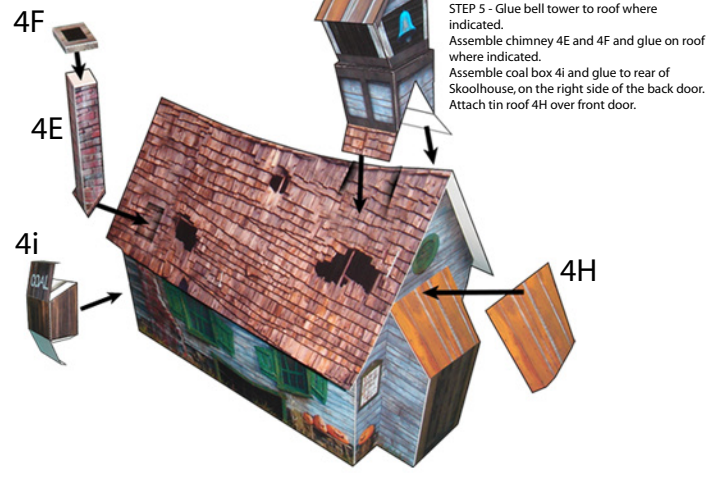
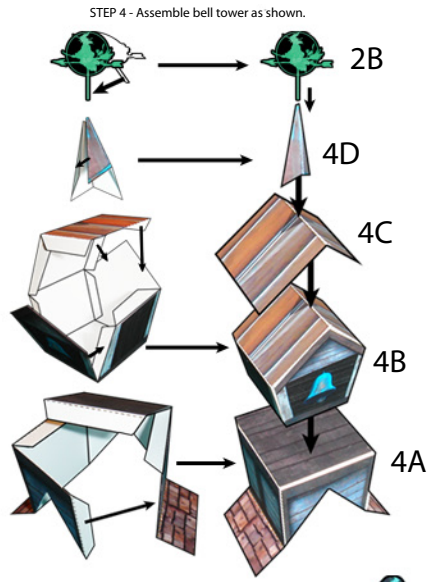
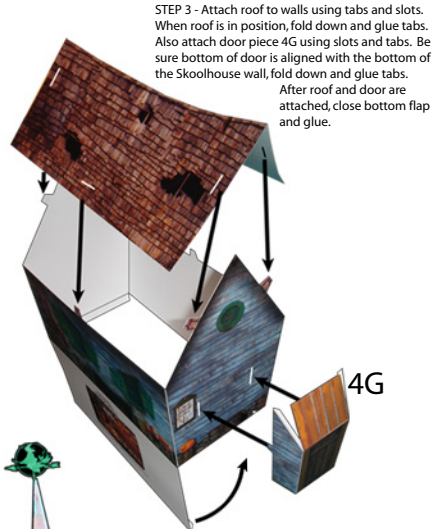
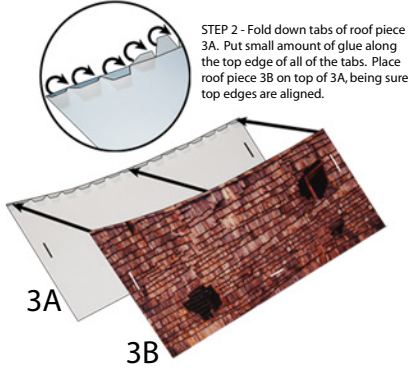
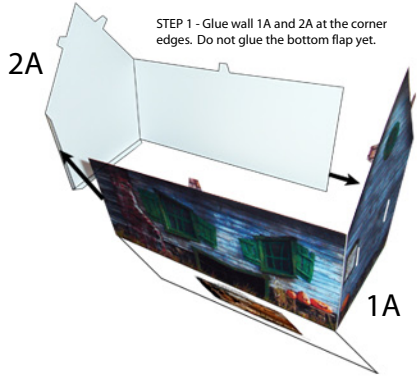


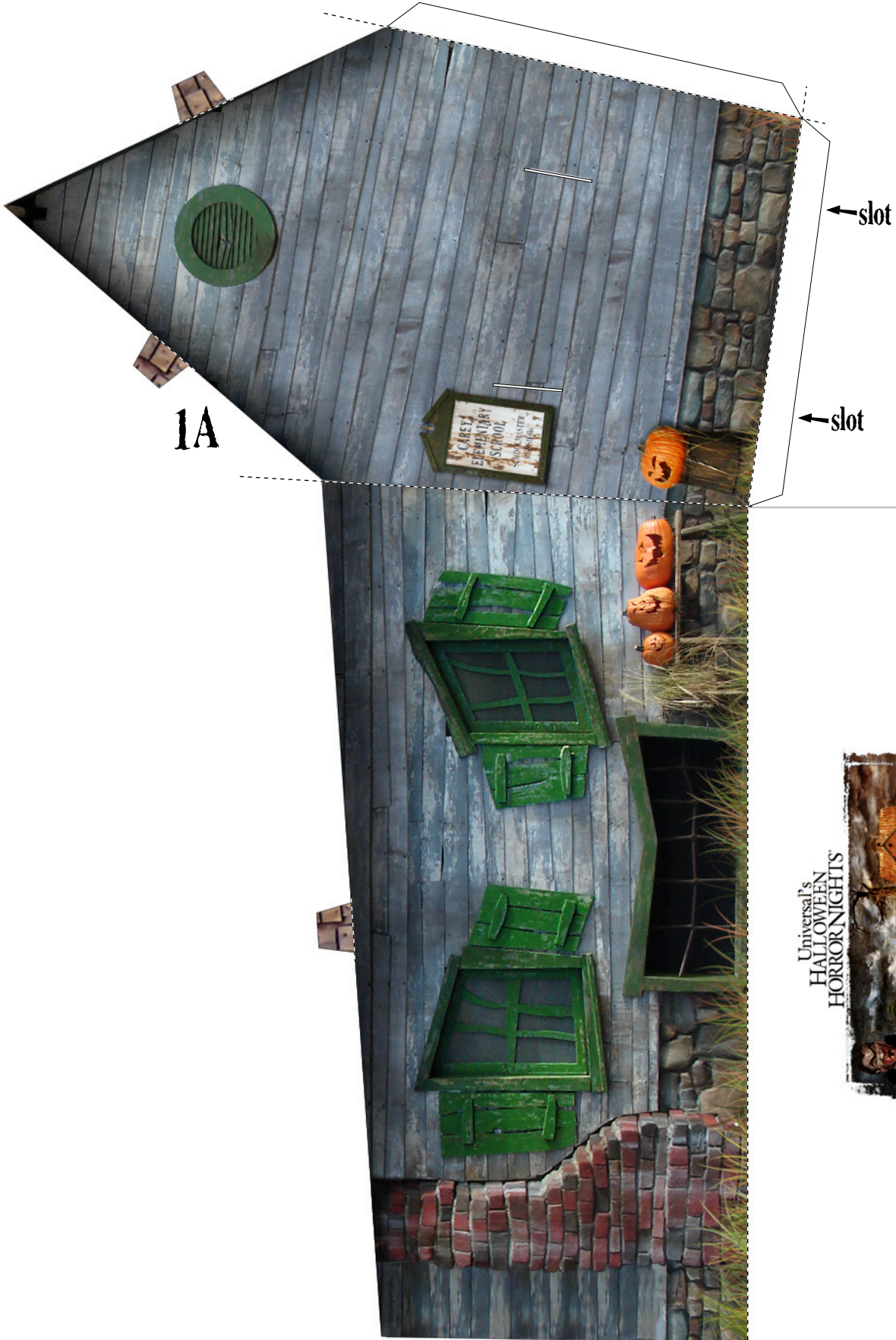
The Skoolhouse

Universal's HALLOWEEN HORROR NIGHTS

Universal elements and all related indicia. © 2008 Universal Orlando. All rights reserved.

Please note that this project is not recommended for children. It requires a moderate degree of skill, and the use of a cutting blade, which is extremely dangerous. When using cutting blades always use protective eyewear. Color printing is recommended. This model was designed to be printed on Matte Paper Heavyweight, and the use of white glue is recommended. There are many folds in the model, and it is recommended that you score the fold first, using a dull cutting blade, or other fine, blunt tipped instrument. Black dashed lines represent a mountain fold (a fold which point upward), and orange dashed lines represent a valley fold (the fold points downward). The orange dashed lines are accompanied by a red "+" at each end. These are to be used as pin guides, so you can poke small holes at the "+" flip the sheet over, and score between the holes for a clean valley fold. Read the instructions and study the illustrations carefully before beginning.





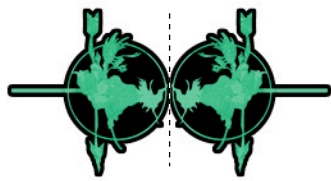
1A



Universal elements and all related indicia (c) 2008 Universal Orlando. All rights reserved



2A



2B

3A

slot
↓



slot
↓

↑
slot

3B

slot
↓



slot
↓

↑
slot

