



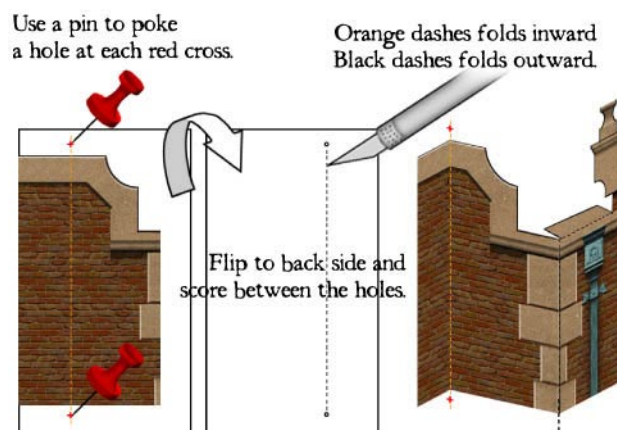
Please note that this project is not recommended for children. It requires a moderate degree of skill, and the use of an X-acto blade. White glue is recommended, and a nice pair of tweezers will make many of the smaller operations much easier to manage.

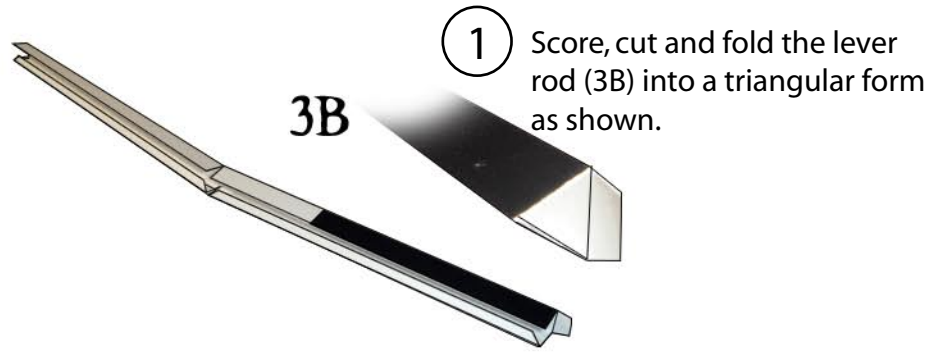
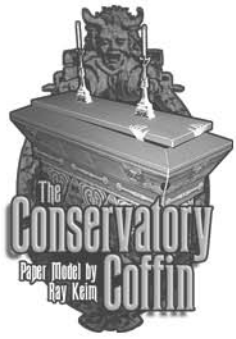
Color printing is recommended. Make sure you have enough paper and ink! This model was designed to be printed on EPSON Matte Paper Heavyweight. The use of plain paper is not recommended.

Become acquainted with the various pieces, and read the directions before you begin. There are many folds in the model, and it is recommended that you score the fold first, using a dull X-acto, or other fine, blunt tipped instrument. Black dashed lines represent a mountain fold (a fold which point upward), and orange dashed lines represent a valley fold (the fold points downward). The orange dashed lines are accompanied by a red "+" at each end. These are to be used as pin guides, so you can poke small holes at the "+", flip the sheet over, and score between the holes for a clean valley fold. Some lines may be hard to see, and can be missed. Read the instructions and study the illustrations carefully.

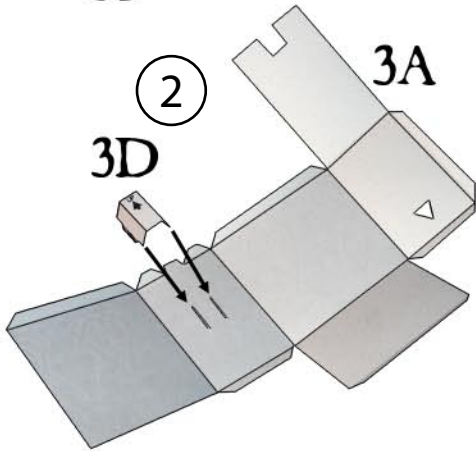
Have fun building your Conservatory Coffin!

Ray Keim © 2007
<http://www.haunteddimensions.raykeim.com/>





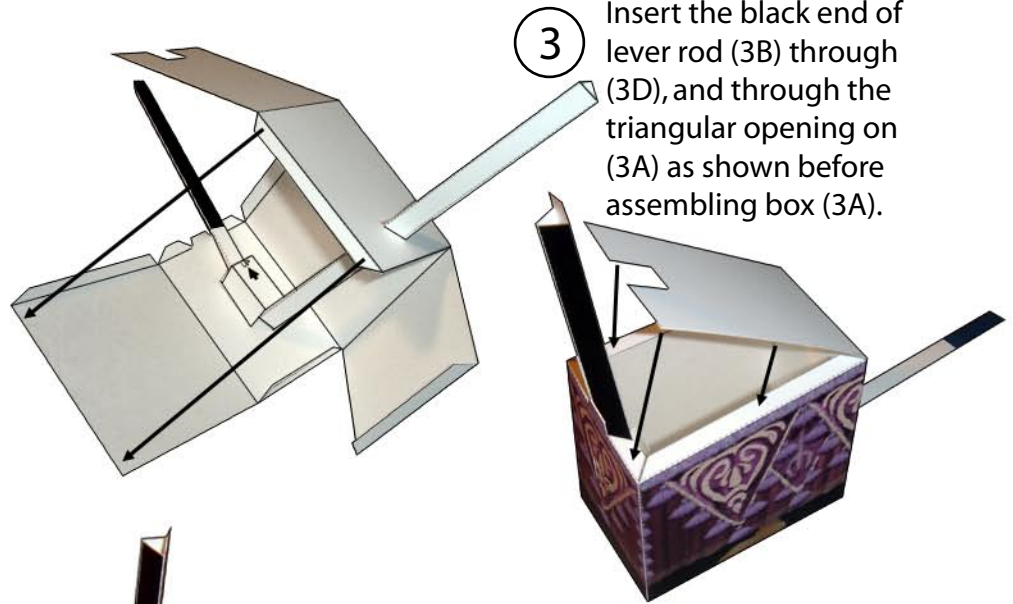
1 Score, cut and fold the lever rod (3B) into a triangular form as shown.



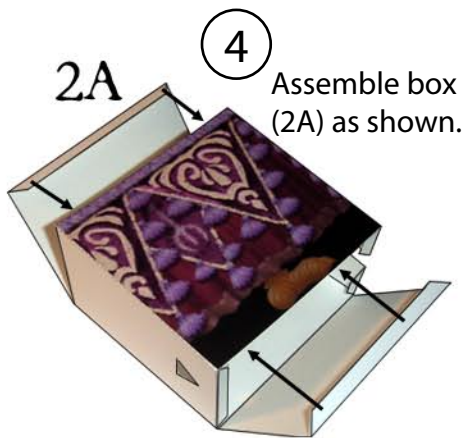
2

3A

3D

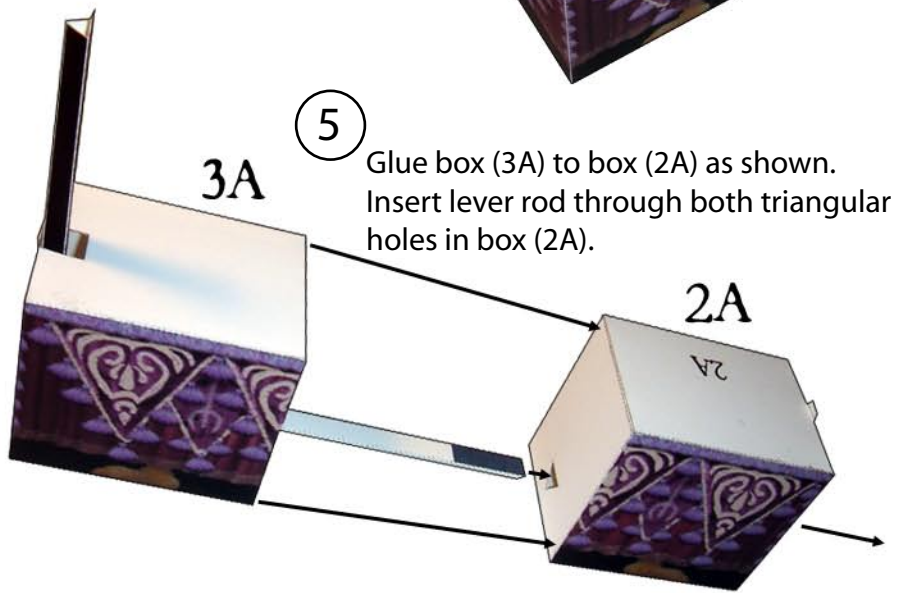


3 Insert the black end of lever rod (3B) through (3D), and through the triangular opening on (3A) as shown before assembling box (3A).



4 Assemble box (2A) as shown.

2A

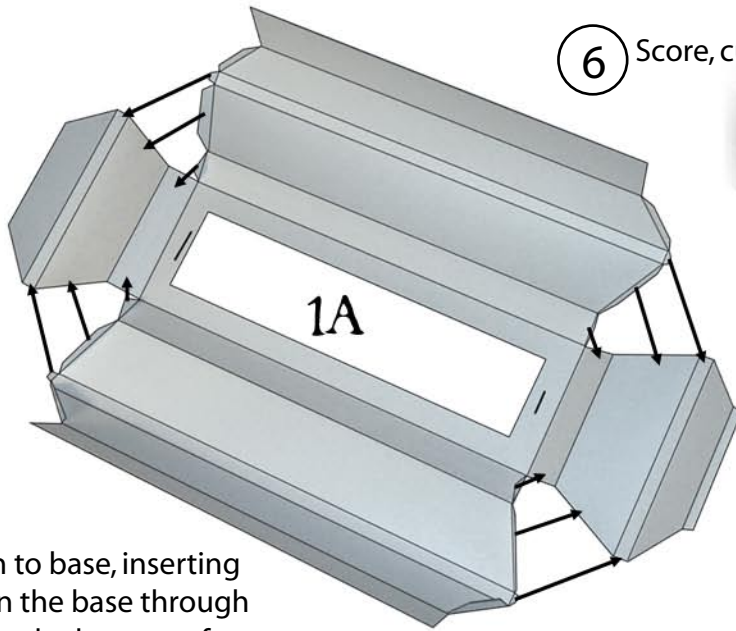
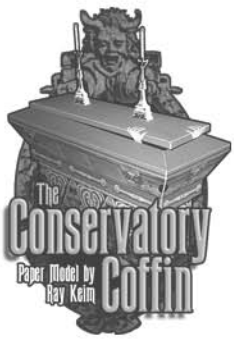


5 Glue box (3A) to box (2A) as shown. Insert lever rod through both triangular holes in box (2A).

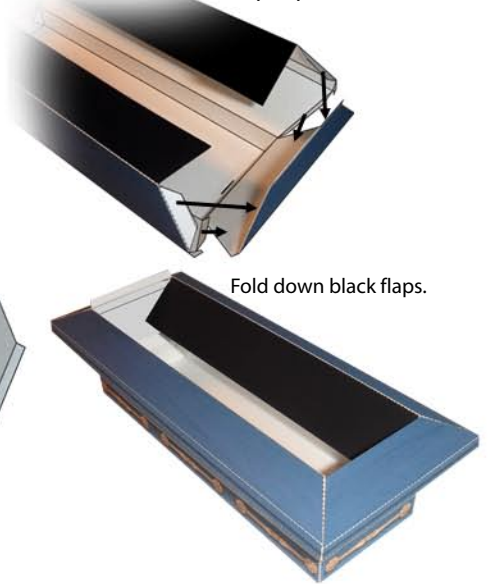
3A

2A





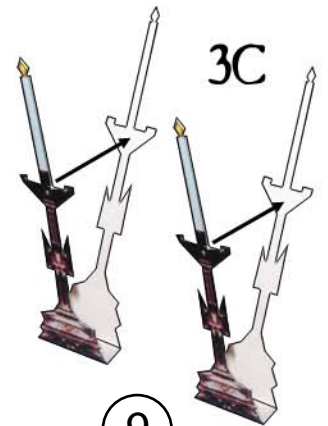
6 Score, cut and fold coffin (1A) as shown.



7 Glue coffin to base, inserting the tabs on the base through the slots on the bottom of the coffin.



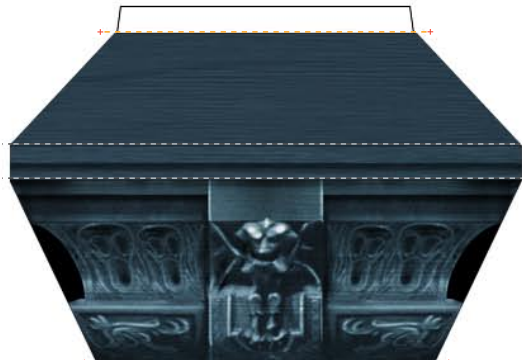
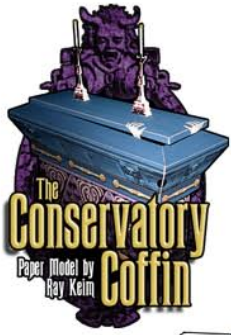
8 Assemble coffin lid (2B) as shown and glue coffin lid (2B) to the tab on the end of the coffin (1A), and insert the lever rod tab (3B) through slot on coffin lid.



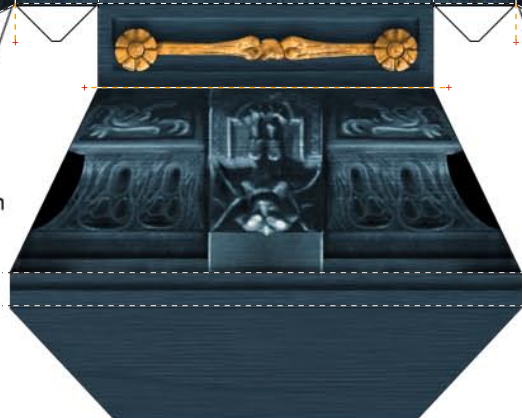
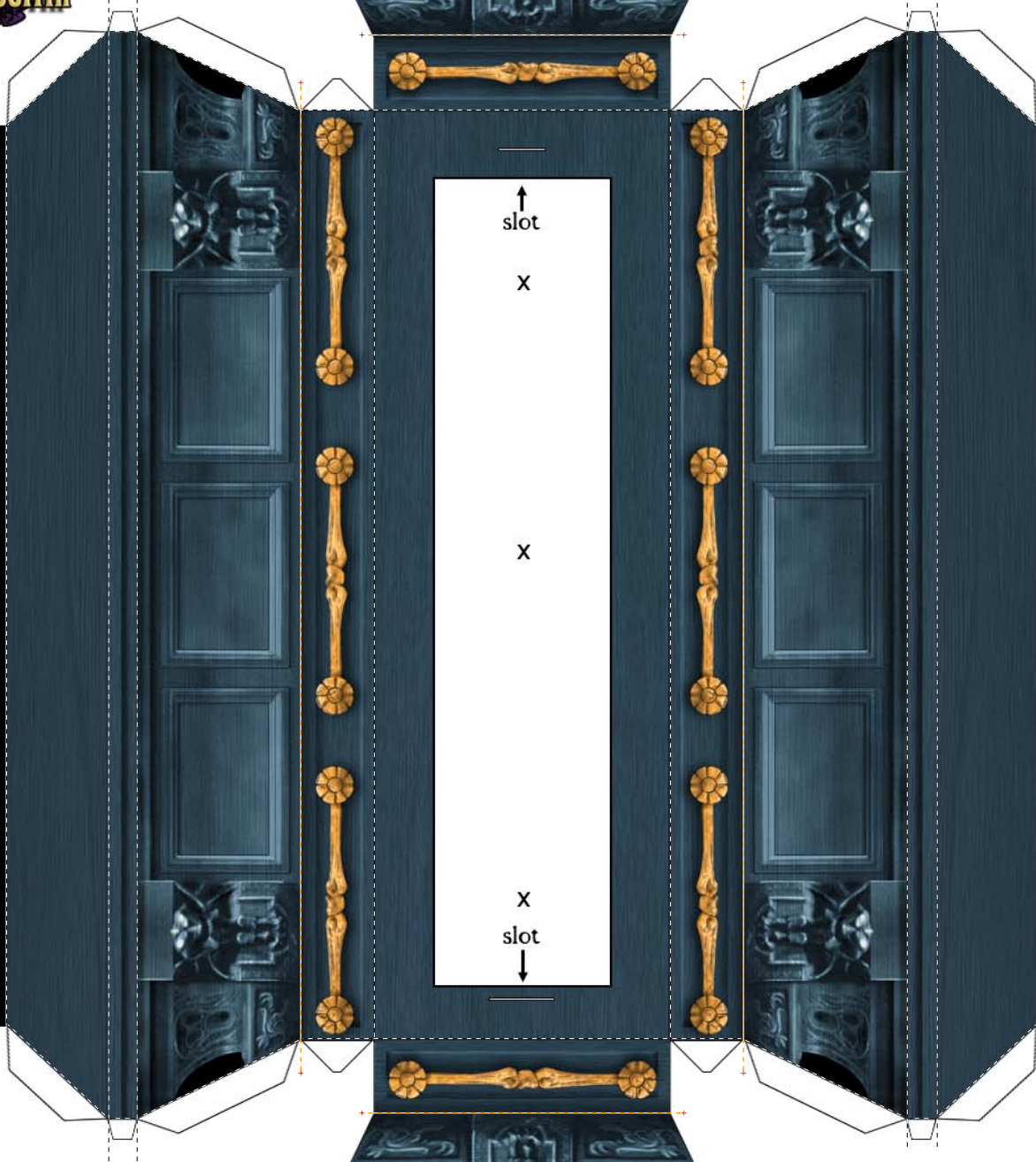
9 Glue candle tops as shown and glue bases to rectangular markings on coffin lid (2B).



Slide lever up and down to move coffin lid.

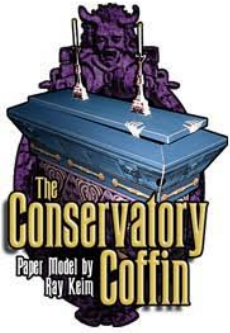


1A



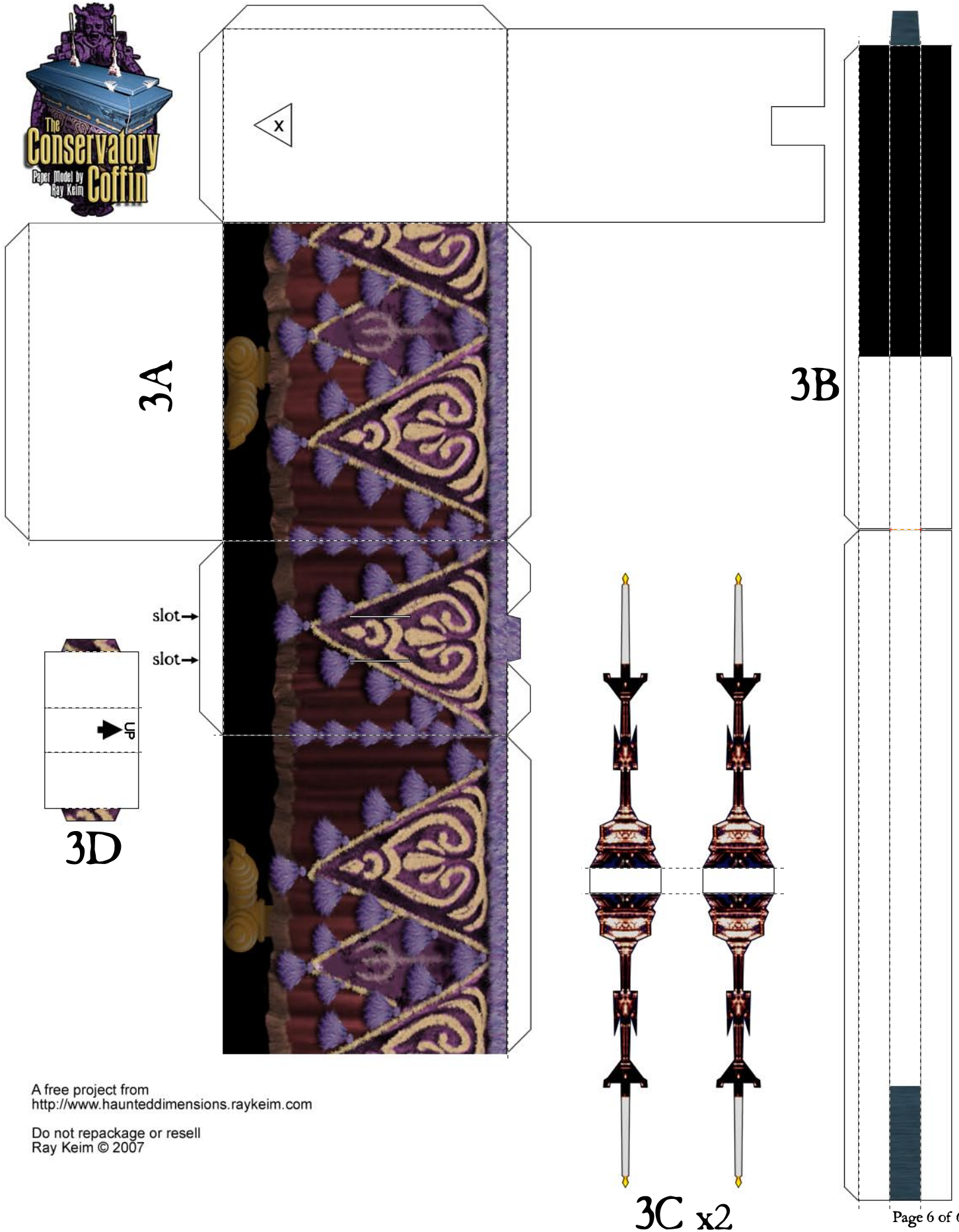
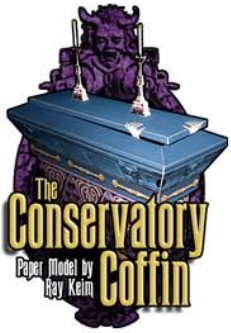
A free project from
<http://www.haunteddimensions.raykeim.com>

Do not repackage or resell
Ray Keim © 2007



A free project from
<http://www.haunteddimensions.raykeim.com>

Do not repackage or resell
Ray Keim © 2007



3A

3B

3D

3C x2

A free project from <http://www.haunteddimensions.raykeim.com>

Do not repackage or resell
Ray Keim © 2007